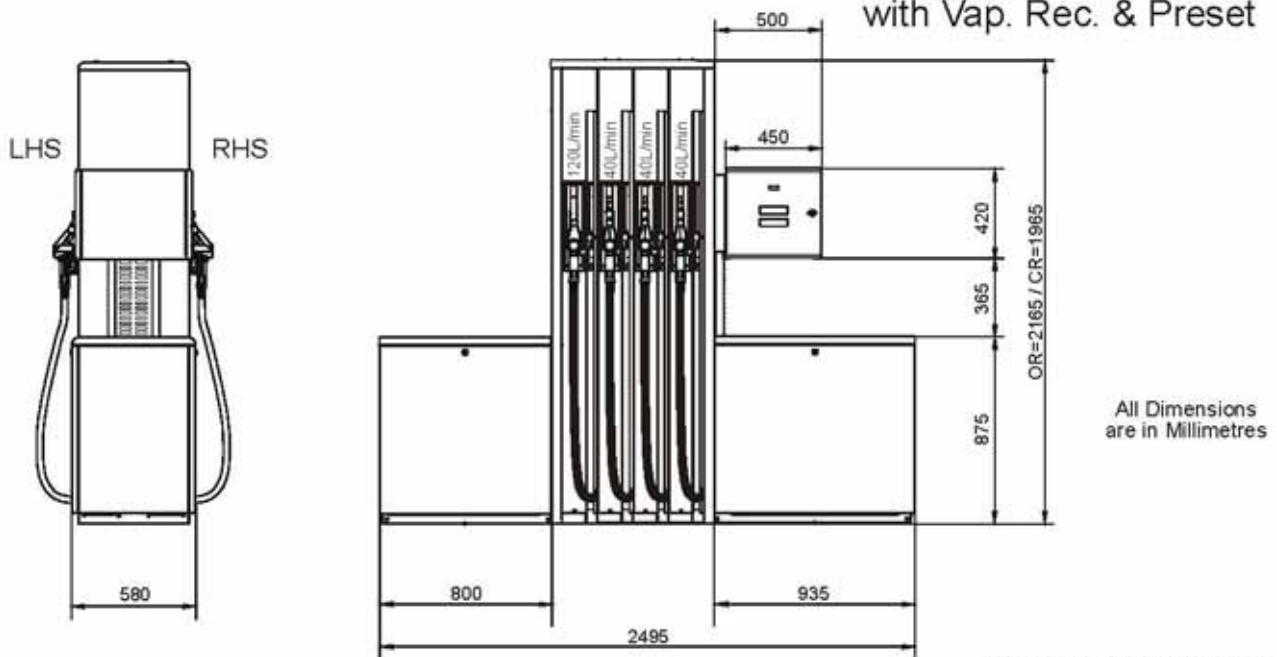


# Overall Dimensions

3 Products + UHF, Suction or STP, with Vap. Rec. & Preset



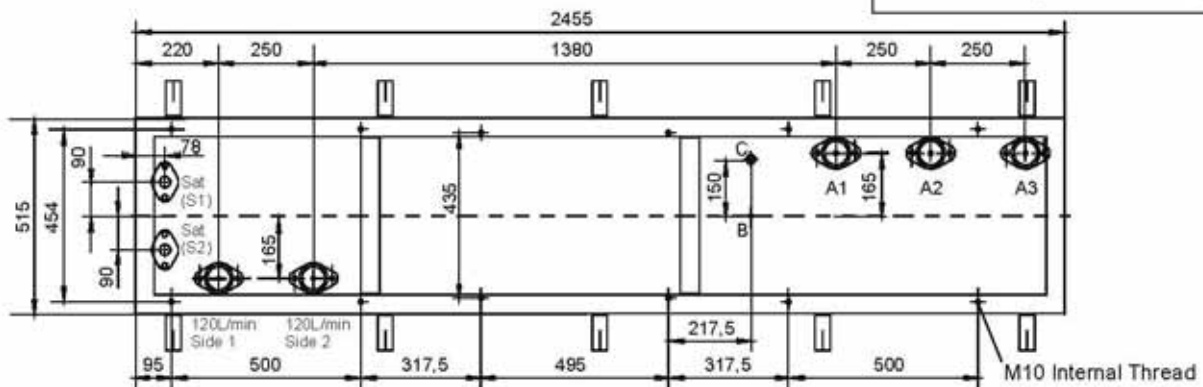
All Dimensions are in Millimetres

Option: Suction connection kit  
140 826 683 For GPU-90  
140 838 943 For GDP-120

# Footprint Details

Right Side of Dispenser (RHS)

Key to Symbols  
A1- A3 - Grade 1 - 3  
B - Cable Riser  
C - Vapour Recovery



Subframe  
Part No. - 140 893 211

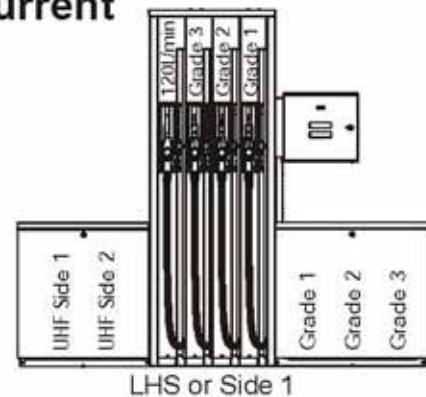
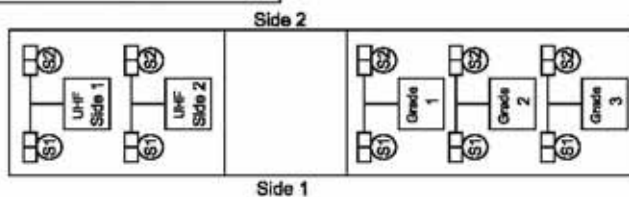
Left Side of Dispenser (LHS)

It is recommended that Vapour Recovery return pipes are installed where this may be a future requirement.

# Module Configuration and Maximum Current

**Suction Pump**  
Motor supply maximum current  
1 Phase Versions, 230V = 12,5 Amps  
3 Phase Versions, 230V = 10,5 Amps  
3 Phase Versions, 400V = 6,0 Amps  
Electronic supply maximum current  
All Versions = 3,0 Amps

**Submerge Turbine Pump (STP)**  
Vapour Recovery maximum current  
3 Phase Motors = 1,0 Amps  
1 Phase Motors = 3,0 Amps  
Electronic supply maximum current  
All Versions = 3,0 Amps



	<p><b>ЗАО «НЕФТЕПРОДУКТТЕХНИКА»</b> Росеня, 119334, Москва, ул. Бардина, 6/30 Тел./факс: (495) 725-04-34 <a href="http://www.neftprod.ru">http://www.neftprod.ru</a> e-mail: <a href="mailto:inf@neftprod.msk.ru">inf@neftprod.msk.ru</a></p>	<p><i>Оборудование для АЗС</i> Официальный дистрибьютор</p>