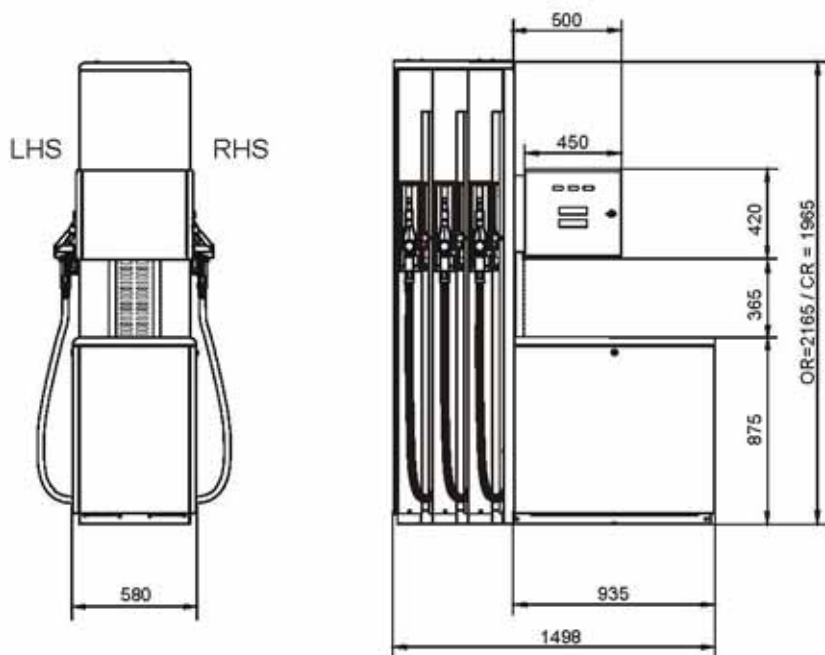


Overall Dimensions

3 Products, 40 l/min, Suction or STP, with Vap. Rec. & Preset

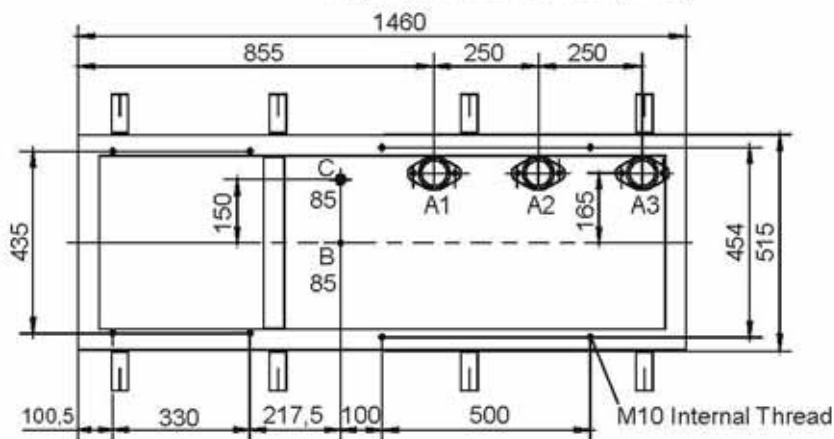


All Dimensions are in Millimetres

Option: Suction connection kit
140 826 683 For GPU-90
140 838 943 For GDP-120

Footprint Details

Right Side of Dispenser (RHS)



Key to Symbols

- A1- A3 - Grade 1, 2, 3
- B - Cable Riser
- C - Vapour Recovery

Left Side of Dispenser (LHS)

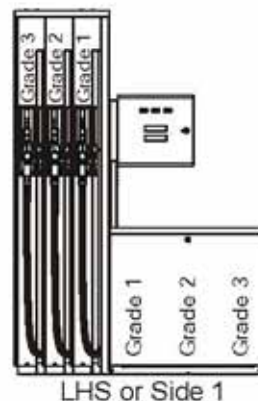
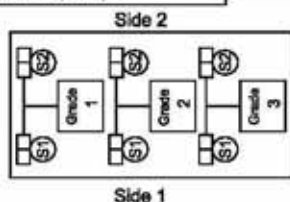
Subframe
Part No. - 140 865 831

It is recommended that Vapour Recovery return pipes are installed where this may be a future requirement.

Module Configuration and Maximum Current

Suction Pump
Motor supply, maximum current
1 Phase Versions, 230V = 12,5 Amps
3 Phase Versions, 230V = 10,5 Amps
3 Phase Versions, 400V = 6,0 Amps
Electronic supply, maximum current
All Versions = 3,0 Amps

Submerge Turbine Pump (STP)
Vapour Recovery, maximum current
3 Phase Motors = 1,0 Amps
1 Phase Motors = 3,0 Amps
Electronic supply, maximum current
All Versions = 3,0 Amps



	ЗАО «НЕФТЕПРОДУКТТЕХНИКА» Россия, 119334, Москва, ул. Бардина, 6/30 Тел./факс: (495) 725-04-34 http://www.neftprod.ru e-mail: inf@neftprod.msk.ru	Оборудование для АЗС Официальный дистрибьютор